

  
**PROMINENCE**  
ESTATES



**RESIDENTIAL**  
PROPERTY EXPERTS

COVENTRY, WARWICKSHIRE  
& LEAMINGTON SPA

**LANGWOOD CLOSE,**  
CANLEY, COVENTRY, CV4 8HE

**£1,950 PER CALENDAR**



## LANGWOOD CLOSE



  
**PROMINENCE**  
— ESTATES —

**\*\*Five Bedroom House, One Room Is Occupied\*\*** Welcome to your new student home! **BILLS INCLUDED** - This spacious and modern house features 5 fully furnished ensuite rooms, perfect for students seeking comfort and convenience. Located just a short distance from Warwick University, this property offers easy access to campus while providing a quiet and conducive environment for study and relaxation.

### Key Features:

**5 Ensuite Rooms:** Each room comes with a private bathroom, ensuring privacy and convenience.

**Fully Furnished:** Rooms are equipped with a comfortable bed, study desk, chair, wardrobe, and ample storage.

**All Bills Included:** No need to worry about extra costs; rent covers utilities, high-speed internet, and more.

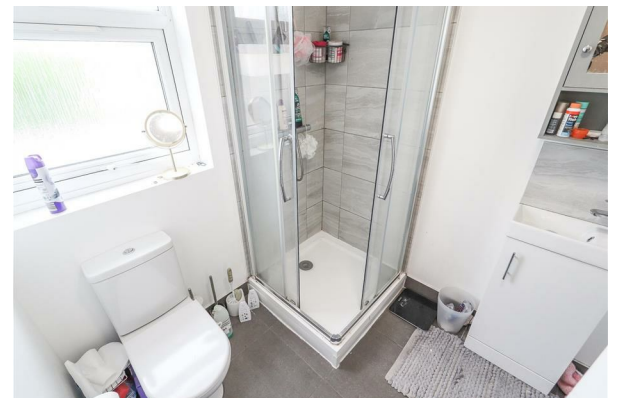
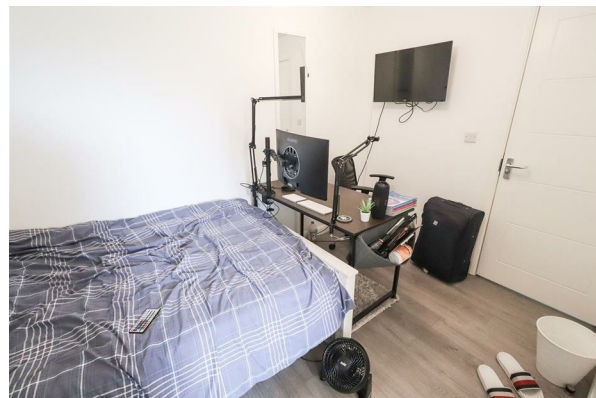
**Communal Spaces:** Enjoy shared access to a modern kitchen, living area, and garden, ideal for socializing and group study sessions.

**Prime Location:** Situated close to Warwick University, with excellent transport links and local amenities nearby.

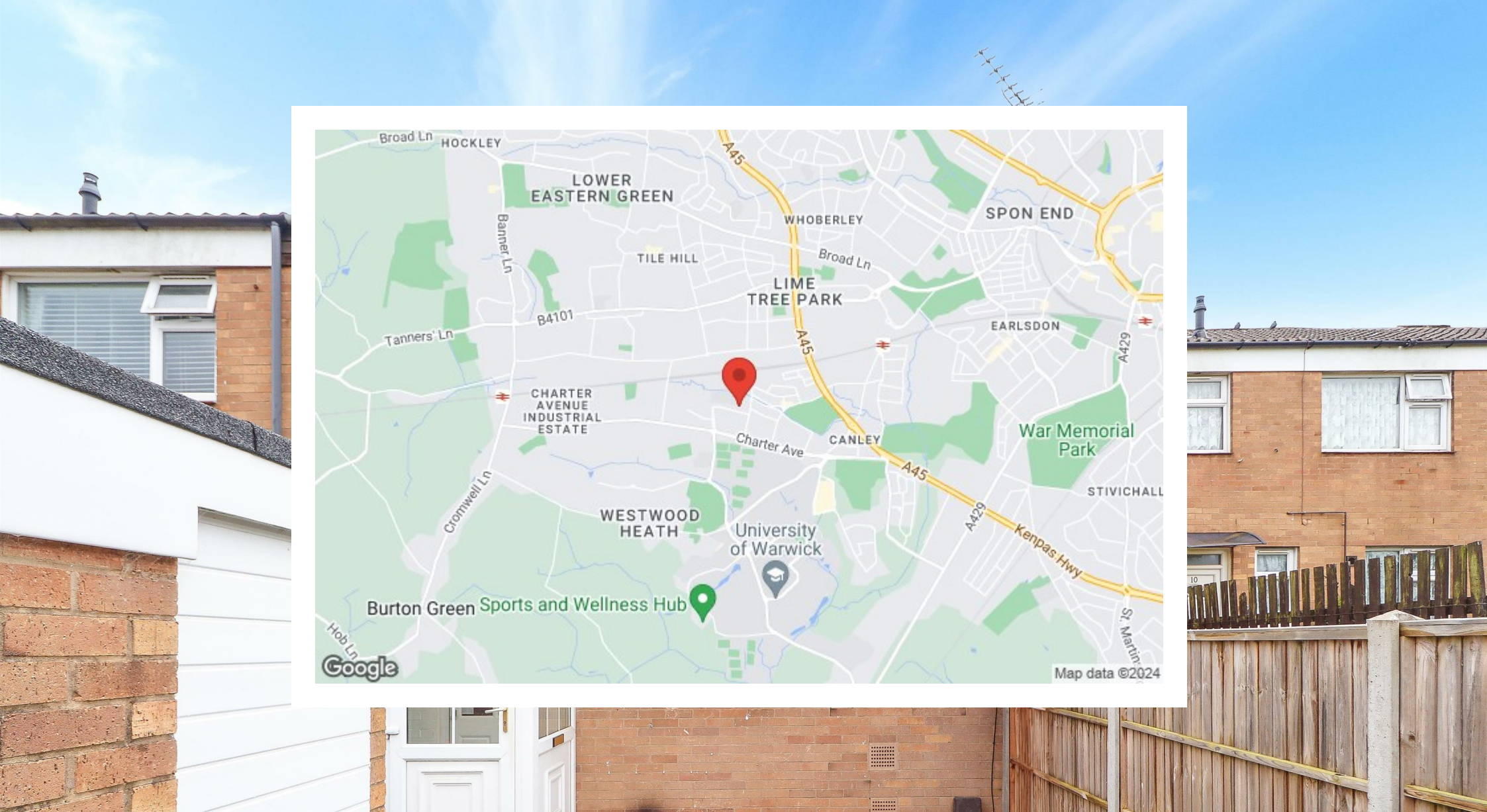
This property is perfect for students looking for a hassle-free, comfortable living experience close to campus. Book your viewing today and secure your room in this fantastic shared house!











Prominence Estates  
5 Queen Isabells Avenue,  
Cheylesmore,  
Coventry,  
CV3 5GE

02476 309 826  
[sales@prominenceestates.com](mailto:sales@prominenceestates.com)  
[www.prominenceestates.com](http://www.prominenceestates.com)

  
**PROMINENCE**  
— ESTATES —